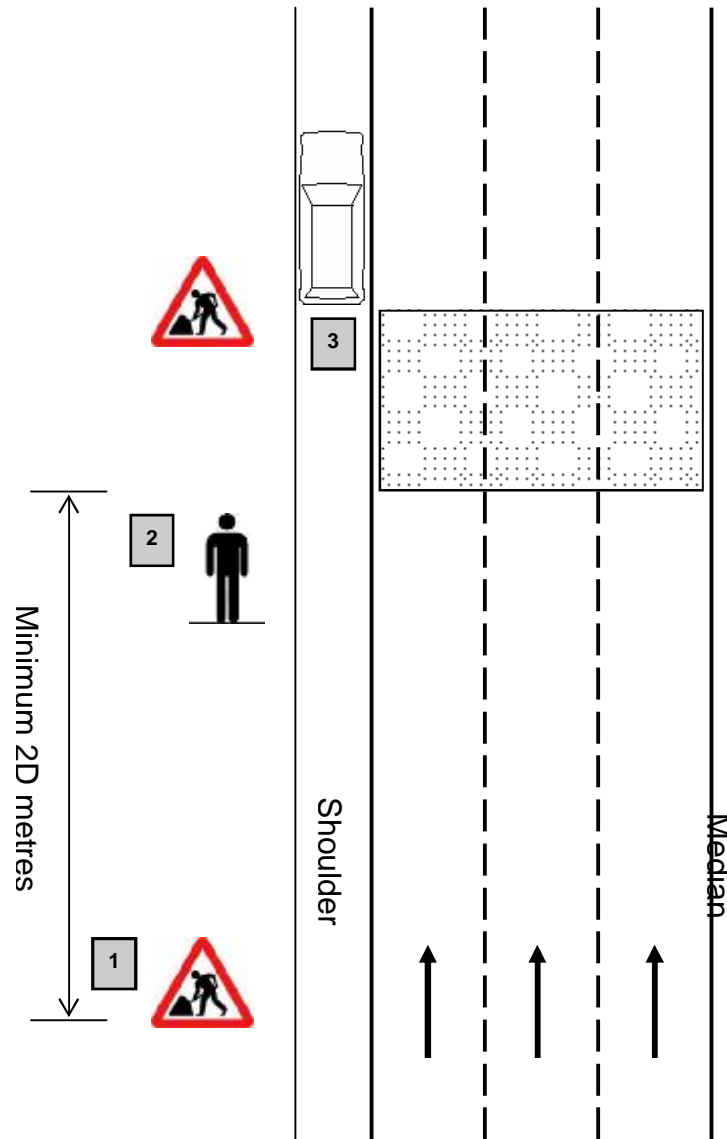




## TCS Traffic Control Plan TCP003



### NOTES:

1. Signs to be used to warn on-coming traffic. Distance to be approximately twice minimum sight distance.
2. Spotter to be positioned within sight and hearing of workers. Sight distance of spotter to on-coming traffic in accordance with TCS Instruments Road Survey Procedures Manual.
3. Work to be undertaken only in direction of travel.